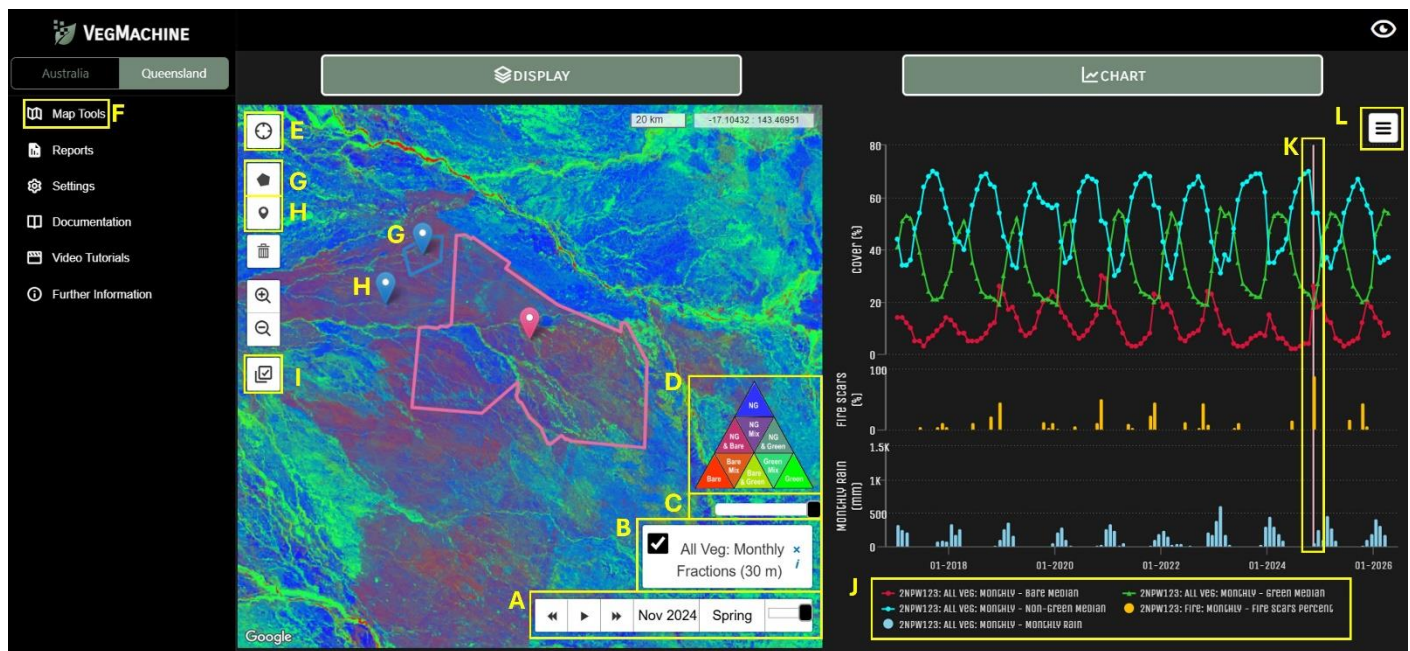


VegMachine Quick Guide - <https://vegmachine.science-data.qld.gov.au/>



Example VegMachine map and chart for Staaten River National Park, north Queensland. In the chart, green vegetation (green line) shows peaks following the summer wet period (rainfall shown in blue bars). As this green vegetation dries, the proportion of dry vegetation (blue line) increases. Finally, the proportion of bare ground (red line) increases late in the dry season, often associated with fires (orange bars).

Display satellite datasets

The map window displays a particular dataset, selected via the 'Display' tab. *Navigate* within the map window by clicking, dragging and zooming.

You can then:

- Explore *historical imagery* using the time slider.
 - Manage the *dataset layer*. The tick box turns the layer on and off.
 - Change the *transparency* of the satellite dataset using the transparency slider.
 - Toggle *legend visibility* by clicking the legend button and the legend itself.
 - Investigate the data values of individual pixels using the *Pixel Identify Tool*.
 - Search for a location or upload your own spatial data using the Map Tools.
- View *property boundaries* via the Vector Overlays option (Queensland only) located in the Display menu.

Chart and extract data

Create a polygon either by

- Uploading a spatial file (via Map Tools)
- Using the polygon tool to draw an area
- Using the marker tool to make ~ 1 ha circle around a point.

Select your area of interest by clicking on your chosen polygon. Selected polygons are pink.

- Select multiple polygons by using the multi-select tool.

Activate the Chart functionality by clicking on the 'Chart' button. The 'Combine' option shows data from all selected polygons, while the 'Compare' option allows comparison between two selected polygons. 'Advanced' charts allow more customisation, including multiple datasets and different statistical summaries.

- Click on the chart legend to turn individual datasets on and off.
- Sync the map display with the chart by clicking on a particular datapoint.
- Once the chart is made, download the underlying data via the chart context menu.

Available datasets

Vegetation

Three main vegetation datasets are available for exploration within VegMachine: Total Veg, Ground Cover, and Woody Veg. These datasets are all based on Fractional Cover, which divides each pixel into its proportion of green vegetation, dry vegetation, and bare ground.

The best dataset to use will depend on whether you are interested in changes in all vegetation (i.e. Total Veg) or components of the vegetation (i.e. Ground Cover or Woody Vegetation). For both Total Veg and Ground Cover, it is possible to investigate green and dry vegetation separately (Monthly and Seasonal Fractions) or combined (Monthly and Seasonal Total).

Higher spatial resolution (10 m) and temporal resolution (monthly) datasets are only available from 2017 onwards, while 30 m resolution, 3-monthly seasonal datasets are available from 1988. The monthly datasets are best for investigating rapid change over a year, while the 3-monthly seasonal datasets are useful for inter-annual changes over longer periods. Some datasets are only available for Queensland.

Fire scars

This dataset shows burnt areas in Queensland each month from 2017 onwards. This dataset does not show active fires, but is useful for managing natural resources, assessing fire hazard and risk, and monitoring impacts over time. Some burnt areas may be missed or mapped later than the month they occurred due to cloud cover or misclassification. Small fires or low intensity burns under tree canopy may also be missed.

More information

More detailed information is available in the VegMachine User Guide, available under the Support section.